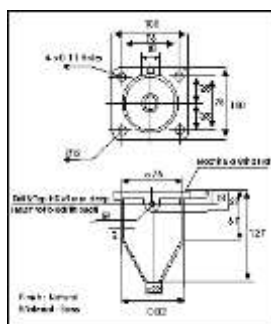


Wiping Gland / Brass Wiping Glands Wiping Glands / Brass Wiping Gland

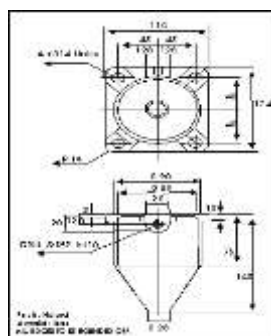
We manufacture and export Wiping Glands. Our range of Cable Glands and Brass items also includes Brass Wiping Gland. These are made of Brass.

Wiping Gland

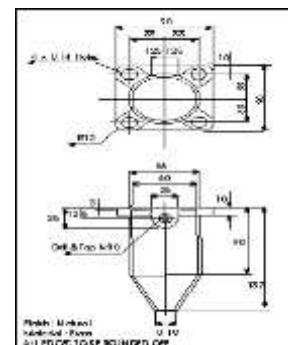
These are made from heavy duty brass & are available as per the following dimensions.



Model Code: WGZ-1



Model Code: WGX-1



Model Code: WGY-1

Gland Size	Dial over metal sheath of cable (mm)	Overall Diameter 'A'										Code
		A	B	ØC	ØD	E	F	G	H	ØJ	R	
X	12 TO 51	137	90	60	19	90	90	66	66	12	12	G27- WGX
Y	25 TO 78	155	95	89	32	114	123	95	86	14	14	G27- WGY
Z	25 TO 94	195	140	108	32	190	100	-	-	14	-	G27- WGZ

We have developed a wide range of Wiping Gland that is manufactured from heavy duty brass. Our range complies with BS standard BS 6121 part I 1989 and can be availed by our clients at competitive prices. These are made from heavy duty brass. Wiping glands are made as per customers drawings & specifications.

Application: For Use with SWA, Plastic and Rubber (Elastomeric) sheathed cables. It is use in dry indoor conditions.

Sizes: As per drawings and specifications

Function: Used with SWA, plastic and rubber sheathed cables. Used indoor conditions inner ring frames positive armour clamp an earth continuity. Material is brass and nickel plated.

Field Names:

Wiping Gland, Brass Wiping Gland, X Type Wiping Gland, Y Type Wiping Gland, Z type Wiping Gland, X type Brass Wiping glands, Y type Brass Wiping glands, Z type Brass Wiping gland, Wiping Glands, Brass Wiping Glands.

Our Other products in Brass Cable Gland & Other Brass Products

S. no.	INDEX
01	BW Industrial Gland (2 Part)
02	BW Industrial Gland (3 Part)
03	TRS Cable Gland
04	A2 Industrial Cable Gland
05	CW Cable Gland (3 Part)
06	CW Cable Gland (4 Part)
07	E1W Brass Gland
08	Hexagonal Cable Gland With Metric Thread
09	Hexagonal Cable Gland With PG Thread
10	Round Cable Gland With Metric Thread
11	Round Cable Gland With PG Thread
12	Reducers
13	Earth Tag
14	Lock Nuts
15	Serated Washers
16	Bolted Gland
17	Tinned Brass Line Tap
18	PVC Shroud/Sleeve
19	O Ring
20	Enlarger
21	Stop Plug (Round & Hexagonal)
22	Marine - Use Watertight Cable Glands
23	G Type Gland
24	Kit Packing
25	Wiping Gland
26	Brass Earthing Terminals
27	Brass Neutral Link/Bar & Connector
28	Brass Inserts
29	Brass Earthing Equipment
30	Brass Reducing Components
31	Brass Battery Terminals
32	Brass Line Tap
33	Brass Anchors
34	Brass Lamp Parts
35	Brass Pcb Terminals
36	Brass Sanitary Parts
37	Brass Auto Parts
38	Brass Electrical Parts
39	Brass Flare Fittings
40	Brass Building Hardware
41	Brass Screws

Admin. Office-

AMIABLE IMPEX.

11 - Govind Chhaya Bldg no.7,
Next . to MCF Garden, Prem Nagar,
Borivali (West), Mumbai- 400092, India

Factory Address-

AMIABLE IMPEX

495, P1,P1,P1, Unit no 3,
Rohitvas, Motapondha, Tal. Kaparada
Dist. Valsad, Vapi – 396191
Gujrat, India

Contact Person -

UJJWAL SHAH

E-mail: maulik@amiableimpex.com

Mob : + 91- 9029533151

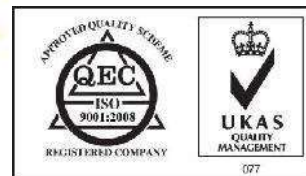


Amiable Impex



Amiable Impex

understands your values



Website: www.amiableimpexindia.com